



PRODUCT SPECIFICATION SHEET

KR Series—High Efficiency Round LED High Bay

KR



KR w/PPR Refractor and PL Lens



KR w/AL-B Reflector



HIGH EFFICIENCY ROUND LED HIGH BAY

Versatility is the primary feature with the new KR Series from Krypton Lighting. The round KR is ideal for projects ranging from very high mounting heights to low-bay applications using the unique KR shielding options. The SMY/AMY stem mounting options are ideal for replacing existing round high-bay fixtures for improved efficiency and appearance.

HOUSING » Aluminum alloy with stainless steel screws. Standard tempered glass lens protects the LEDs. Optional lenses include clear polycarb lens (CPL) and diffuse polycarb lens (DPL).

OPTICS » KR fixtures are available with wide angle (120-degree optics) and focused 90-degree and 60-degree optics. Please see the Krypton Lighting website (Resources page) for IES photometric files.

PPR Refractor Option (Up-Light) » Polycarbonate prismatic refractor diffuses light perfectly. Prismatic lens (PL) is optional. The PPR/PL refractor/lens combination provides 7% up-light.

AL Reflector Option (Shielding) » Aluminum reflector provides 90 degree cutoff to prevent glare. The AL option is available in black (AL-B) and satin aluminum (AL-S).

Mounting » The KR family has a standard stainless steel mounting loop. Optional mounting features include hook mounted (HK), stem mounting yoke (SMY), and adjustable mounting yoke (AMY).

LISTING » Certified to UL 1598 and UL 8750 standards, RoHS, Wet Location Rated, IP65 Rated, DLC Certified. Suitable for ambient temperatures from -30 to +50C



WARRANTY » 5 year limited warranty

KR Series Product Range

MODEL	WATTS	LUMENS	VOLTAGE	BEAM ANGLE	DIAMETER (inches)	HEIGHT (inches) no reflector	HID EQUIVALENT
KR-50/T	50	7000	UNV	120, 90, 60	10.4	6.8	100W
KR-70/T	70	9800	UNV	120, 90, 60	10.4	6.8	100-150W
KR-90/T	90	12600	UNV	120, 90, 60	10.4	6.8	150W
KR-100/T	100	14000	UNV	120, 90, 60	15.1	7.1	150-200W
KR-100/HT	100	16000	UNV	120, 90, 60	15.1	7.1	200-250W
KR-120/T	120	16800	UNV	120, 90, 60	15.1	7.1	250W
KR-120/HT	120	19200	UNV	120, 90, 60	15.1	7.1	250W
KR-150/T	150	21000	UNV	120, 90, 60	15.1	7.1	250-400W
KR-150/HT	150	24000	UNV	120, 90, 60	15.1	7.1	320-400W
KR-150/GHT	150	24000	347-480	120, 90, 60	15.1	10.1	320-400W
KR-200/T	200	28000	UNV	120, 90, 60	15.1	7.1	400W
KR-200/HT	200	32000	UNV	120, 90, 60	15.1	7.1	400W
KR-200/GHT	200	32000	347-480	120, 90, 60	15.1	10.1	400W
KR-240/T	240	36000	UNV	120, 90, 60	15.1	8.0	400W
KR-240/GT	240	36000	347-480	120, 90, 60	15.1	10.1	400-750W
KR-300/T	300	45000	UNV	120, 90, 60	15.1	10.1	750-1000W
KR-300/GT	300	45000	347-480	120, 90, 60	15.1	8.25	750-1000W



TYPE	PROJECT
CATALOG NO.	NOTES

Loop (standard)



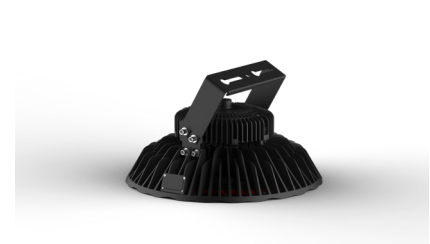
HK hook (chain optional)



SMY yoke (stem by others)



AMY yoke (adjustable)



ORDERING INFORMATION

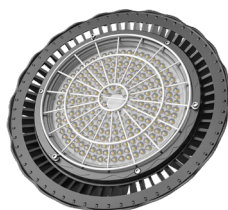
Select Model/Wattage and Voltage		Select Options from Each Column				
MODEL	VOLTAGE	CCT	OPTIC	MTG	DIFFUSER OPTIONS	OPTIONS
KR-50/T	UNV (120-277)	5K or 4K	120 degree (wide)	STD (standard mounting loop allows for chain hanging)	CPL Lens – clear polycarb lens replaces std glass lens DPL Lens – diffuse polycarb lens replaces std glass lens PPR Refractor – 7% Up-Light PPR-PL Refractor w/lens – lens attaches to refractor AL-B (90 degree reflector) – aluminum w/black finish AL-S (90 degree reflector) – aluminum w/ satin finish <i>Note: KR supplied with standard tempered glass lens.</i>	MS – motion sensor (factory installed with mounting bracket-see picture below) WG – wire guard
KR-70/T	UNV (120-277)					
KR-90/T	UNV (120-277)					
KR-100/T	UNV (120-277)		90 degree (aisle)	HK – hook SMY – stem AMY – yoke		
KR-100/HT	UNV (120-277)					
KR-120/T	UNV (120-277)					
KR-120/HT	UNV (120-277)		60 degree (narrow)			
KR-150/T	UNV (120-277)					
KR-150/HT	UNV (120-277)					
KR-150/GHT	347-480					
KR-200/T	UNV (120-277)					
KR-200/HT	UNV (120-277)					
KR-200/GHT	347-480					
KR-240/T	UNV (120-277)					
KR-240/GT	347-480					
KR-300/T	UNV (120-277)					
KR-300/GT	347-480					

EXAMPLE: KR-300GT 347-480 5K 120 STD PPR-L DIM

NOTES

1. 0-10V dimming drivers are standard on all KR models.

KR Series with Wire Guard (WG) Option



KR with MS motion sensor option



KR w/480V driver

